

*2022*  
*South Dakota*  
*Horseshoe Tournament*

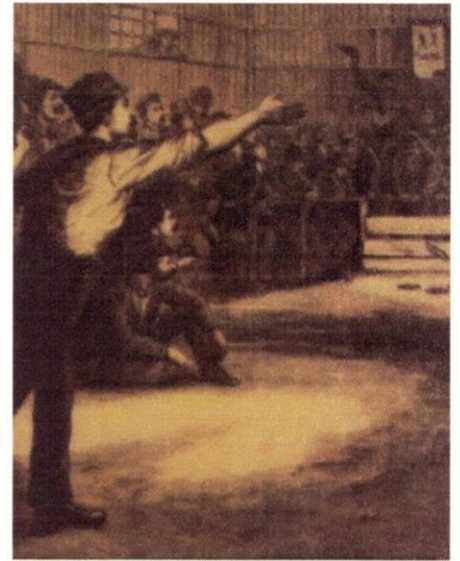


*Hosted By*  
*Pierre Horseshoe Club*  
*27 & 28 August*

# History of Horseshoes & NHPA

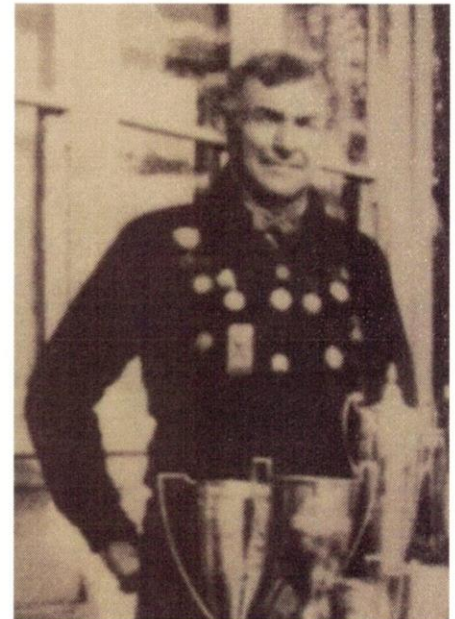
The sport of horseshoes has an ancient association with the game of quoits. Horseshoe historians have not been able to discover when the game of quoits or horseshoes was changed so that it was pitched at two stakes, but it is pretty well established that horseshoe pitching had its origin in the game of quoits and that quoits is a modification of the old Grecian game of discus throwing.

In quoits, players threw a round metal ring and attempted to strike or encircle a peg driven into the ground. It is known that quoits was a popular game among Roman soldiers. One scenario is that the round metal discs were heavy and inconvenient to carry, so soldiers began bending horseshoes into a circle shape and later just threw them as they were.



The first horseshoe pitching club was organized in Meadville, Pennsylvania, in 1899. Unfortunately, little is known about it. The first tournament in which a competition was open to the world was held in the summer of 1910 in Bronson, Kansas. The first known rules came from this tournament. The stakes extended only 2 inches above the ground level and were 38 feet apart. Ringers counted 5 points, leaners 3 points, and other scoring shoes 1 point each, with the winner being the first competitor to score 21 points. The winner, Frank Jackson, was awarded a World Championship belt with horseshoes attached.

The first ruling body of horseshoe pitching organized in Kansas City, on May 16, 1914. The name chosen was the Grand League of the American Horseshoe Pitchers Association. At this time the stake was raised to 8 inches. In the 1919 tournament, the distance between stakes was increased to 40 feet and the game was raised to 50 points. The following year, the height of the stake was raised to 10 inches and the diameter was increased from  $\frac{3}{4}$  inch to 1 inch. (Leaning slightly toward the opposite stake). Leaners were eliminated from scoring, except as close shoes counting 1 point each. In the 1930s the stake was raised again to 15 inches and the number of points for an official game went from 50 to 40 points.



A second organization, the National League of Horseshoe and Quoit Pitchers (NLHQP), had been founded in St. Petersburg, Florida, on February 26, 1919 and incorporated in Ohio in 1921. On May 10, 1921, the National Horseshoe Pitchers Association of the United States was incorporated under the laws of the State of Ohio, with headquarters in Akron. It appears as if there was a race to get control of the sport, however the two groups merged as the National Horseshoe Pitchers Association of America in 1925. It's now known simply as the National Horseshoe Pitchers Association (NHPA). It is estimated that upwards of fifteen million enthusiasts enjoy pitching horseshoes in the United States and Canada in tournaments, leagues, recreation areas, and backyards.



*2022*  
*South Dakota Horseshoe Pitchers*  
*Hall-of-Fame*



*Thebea Thomas*  
**Belle Fourche**

Thebea Thomas was born in Belle Fourche, SD, on June 13, 1962. She was one of four children. She has two brothers and one sister. Thebea has two sons and one daughter.

Thebea didn't grow up playing horseshoes. As a matter of fact, she was the only member of her family to pitch horseshoes, until this year when she convinced her sister, Tara, and her nephew, Tyson, to play. She was invited by someone from the Belle Fourche Horseshoe Club to pitch so she thought she would give it a try. Until that point, she had never picked up a horseshoe. She enjoyed the game and said it was because of the pitchers she has met and the comradery. She has been a member of SDHPA since 2012.

On Monday nights during the summer, you can find Thebea down at the Belle Fourche Moose Lodge throwing horseshoes with her friends and family! She is always trying to find more players. Thebea has always played an important role in this league, organizing teams, players, and tournaments. She is a natural and talented player, whose dedication to the game has made her a lead player for her team. In 2021 she played in the World Tournament in Winnemucca NV where she got 4<sup>th</sup> in her class. She has been a past South Dakota State Class Champion in Women's Singles and in Doubles. Thebea is a hardworking rancher in eastern Montana who's love for the game of horseshoes is noticeable if you have ever seen her play! She enjoys catching up with the other local player's while keeping the game competitive and fun!

When Thebea is not hard at work taking care of the family ranch that has been in business for over 100 years, she enjoys working on her investment properties and taking "fixer uppers" and turning them into nice family homes. She enjoys a good bargain and can be found searching for the best deals for her remodeling projects at local and regional ReStores! She is also a talented seamstress and works diligently to create beautiful quilts that she donates mostly to charitable events.

Thebea has been serving not only her own rural community for decades, but also serves surrounding communities in Montana and South Dakota. Currently, she is on the Carter County School Board as a trustee who represents Carter County High School. Thebea is also a volunteer for the eastern Montana local 4-H Club "Gumbo Gophers." She has volunteered for this program for over thirty years! She has supported her own children through the 4H program, her grandchildren, and many other children in the community.

Her love of horseshoes is evident to everyone who is around her. Thebea works tirelessly for the Belle Fourche Horseshoe Club and helps at other tournaments getting things ready, purchasing, and donating items for the state banquet to give away as door prizes, and keeping score. She is truly worthy to be a member of the South Dakota Horseshoe Hall of Fame. Congratulations Thebea!

South Dakota Horseshoe Pitchers Association  
Officers Meeting Minutes  
August 27, 2022

Those present were Kurt Whaley, Tom Dunham, and Carlene Barber.

The meeting was called to order by President Kurt Whaley.

It was moved by Tom Dunham, seconded by Carlene Barber to approve the August 28, 2021, officer meeting minutes. Motion carried.

The 2022 preliminary treasurer's report was reviewed. No action needed until business meeting.

Committee Reports:

Trophy: Six trophies were purchased at a cost of \$42 each, plus tax.

Hall of Fame: Everything is ready to go for the presentation.

Vacancy of Officers: President (Kurt Whaley), 2<sup>nd</sup> Vice President (Cliff Ziehl), and State Statistician are up for election. Since tourney results are submitted on eShoe, there is no need for a state statistician. Kurt and Cliff are willing to keep their positions. In 2023 the Secretary/Treasurer (Carlene Barber) is up for election. Members will be encouraged to let an officer know by July 1<sup>st</sup> if they are interested in that position.

Old Business:

Pierre will host 2023 state tournament.

New Business:

State Tournament bids for 2024. Pierre has a standing bid and no other club has put a bid in to host.

SD had 4 pitchers attend the World Tournament in Monroe, Louisiana. Kurt Whaley will let the members know at the business meeting about a proposed age change to the Elders class. The 2023 World Tournament will be held in Lansing, Michigan July 17-29, 2023.

The officers will again propose a \$50 donation to the SD State Hall of Fame.

It was moved by Tom Dunham, seconded by Carlene Barber to adjourn. Motion carried.

Respectfully submitted,

Carlene Barber  
SDHPA Secretary/Treasurer

South Dakota Horseshoe Pitchers Association  
Annual Business Meeting Minutes  
Saturday, August 27, 2022

President Kurt Whaley called the meeting to order.

It was moved by Crystal Walton, seconded by Tanner Steineke to approve the August 28, 2021, Business Meeting Minutes. Motion carried.

It was moved by Steve Hofland, seconded by Chace Humphrey to approve the 2021 Final Treasurer's Report. Motion carried.

It was moved by Steve Hofland, seconded by Jack Orwick to approve the 2022 Preliminary Treasurer's Report. Motion carried.

**Committee Reports:**

Trophy: Six trophies were purchased at a cost of \$42 each plus tax.

Website: Discussed if the website was worth the cost. It was suggested that the "hits" to the website be monitored and then we would know if the website is worthwhile.

**Officers:**

President Whaley announced that he appointed Bryce Chambers to fill the 1<sup>st</sup> Vice President position that was vacated in 2021. This year the President (Kurt Whaley), 2<sup>nd</sup> Vice President (Cliff Ziehl), and State Statistician positions are up for re-election. Since we now use eShoe to submit tournament information, we no longer need a State Statistician so we will not fill that position. Since no one expressed interest in the President and 2<sup>nd</sup> Vice President positions, Kurt and Cliff will serve in that capacity for another term. In 2023 the Secretary/Treasurer (Carlene Barber) position is up for election. If anyone has any interest in this position, please let an officer know by July 1, 2023.

**Old Business:**

Pierre will be the host site for the 2023 State Horseshoe Tournament.

**New Business:**

Pierre has a standing bid to host the state tournament and no other club put a bid in so Pierre will host the 2024 state horseshoe tournament.

The 2022 World Tournament was held in Monroe, LA. SD had 4 participants and they had a great showing: Vine Marks – 2<sup>nd</sup> Place in Elder E2, Steve Berning – 5<sup>th</sup> Place in Elder D2, Jim Wike – World Champion in Senior Men B, and Carla Brave – 3<sup>rd</sup> Place in Women E. Great job everyone! The 2023 World Tournament will be in Lansing, Michigan July 17-29.

At the World Tournament, Steve Berning was our SD delegate. NHPA is wanting states to vote on a possible rule change for Elders to be at 65 instead of 70. Each state will be allowed one vote. A yes vote is to change the Elders age from 70 to 65 and a no vote is to leave it as is. Yes – 25      No – 4.      SD will put their vote in to change the Elders age to 65.

It was also mentioned that there is a possibility that Sioux Falls will put a bid in to host the World Tournament.

The officers recommend that the SDHPA donate \$50 to the SD Hall of Fame to thank them for displaying our Hall of Fame trophy in their building in Chamberlain. There was no objection to this.

**Longevity Awards:**

30 Years: Kurt Whaley

10 Years: Steve Berning, Logan Chambers, Lowell Speers, and Thebea Thomas

It was moved by Sheldon Struble, seconded by Carl Chambers to adjourn. Motion carried.

**HALL OF FAME PRESENTATION:**

The Hall of Fame recipient for 2022 is **THEBEA THOMAS**. Congratulations Thebea!

Respectfully submitted,  
Carlene Barber  
SDHPA Secretary/Treasurer

2022 South Dakota Horseshoe Pitching Association  
Final Treasurer's Report  
September 5, 2022

	Income	Expense	Balance
Balance 10/5/2021			\$1915.81
State Dues	\$2375.00		
State Entry Doubles	\$785.00		
State Entry Singles	\$905.00		
Banquet	\$895.00		
Local Clubs Donated Prize Money: Soo Area \$100; Pierre \$250; Spearfish \$100; Belle Fourche \$50	\$500.00		
Sanctioned Tournament Fee (\$6 per tournament)	\$114.00		
Donations Memory of Will Waddle - \$100 Memory of Gene Ewing - \$140 Memory of George McIntyre - \$35 Donation by Belle Fourche Club - \$37	\$312.00		
Auction Donations	\$330.00		
<b>TOTAL INCOME</b>	<b>\$6216.00</b>		
Trophies		\$263.34	
Postage and Copying Expenses		\$153.75	
Secretary of State Fee		\$10.00	
NHPA Dues		\$1705.00	
State Tournament Awards		\$1650.00	
Secretary Fee		\$100.00	
State Trophy Plates		\$143.59	
Banquet Fees		\$1000.00	
Hall of Fame Plaque + Brochures		\$103.31	
SD Hall of Fame Donation		\$50.00	
SDHPA Website Charges		\$235.47	
Scorekeepers		\$161.00	
First Time State Champion (Jim Wike)		\$50.00	
<b>TOTAL EXPENSES</b>		<b>\$5625.46</b>	
Balance as of September 5, 2022			<b>\$2506.35</b>

Membership Report for 2022:

Adult - 67

Junior - 6

Cadet - 0

TOTAL: 73

Adult Membership is down 6 and Junior Membership is the same.

New Members:

5 - Adults

0 - Juniors

0 - Cadets





**Doubles  
State Champions  
Carl Chambers – Macey Chambers**



**Junior Boys State Champion  
Chace Humphrey**



**Ladies State Champion  
Macey Chambers**



**Elders State Champion  
Vine Marks**



**Mens State Champion  
Jim Wike**





#### Doubles Class A

**State Champions**  
**2<sup>nd</sup> Place**  
**3<sup>rd</sup> Place**

**Carl Chambers**  
**Chace Humphrey**  
**Roland Roach Jr.**

**Macey Chambers**  
**Roland Kleinschmidt**  
**Robert Red Shirt**



#### Doubles Class B

**1<sup>st</sup> Place**  
**2<sup>nd</sup> Place**  
**3<sup>rd</sup> Place**

**Dan Cahill**  
**Tracey Heaton**  
**John Barber**

**Thebea Thomas**  
**Aaron Sestak**  
**Carlene Barber**





#### Doubles Class C

**1<sup>st</sup> Place**  
**2<sup>nd</sup> Place**  
**3<sup>rd</sup> Place**

**Bryce Chambers**  
**Arlen Lee**  
**Crystal Walton**

**Logan Chambers**  
**Richard Tin Cup**  
**Tanner Steineke**



#### Doubles Class D

**1<sup>st</sup> Place**  
**2<sup>nd</sup> Place**  
**3<sup>rd</sup> Place**

**Cody Haiwick**  
**Dee Robinson**  
**Glen Minske**

**Robert Haiwick**  
**Dakotah Steineke**  
**Jack Orwick**





#### Ladies Class A

**State Championship**  
**2<sup>nd</sup> Place**

**Macey Chambers**  
**Carlene Barber**



#### Elders Class A

**State Championship**  
**2<sup>nd</sup> Place**  
**3<sup>rd</sup> Place**

**Vine Marks**  
**Robert Red Shirt**  
**Steve Berning**





**State Championship**  
**2<sup>nd</sup> Place**  
**3<sup>rd</sup> Place**

**Mens Class A**  
**Jim Wike**  
**Roland Roach Jr.**  
**Anthony Tallman Jr.**



**1<sup>st</sup> Place**  
**2<sup>nd</sup> Place**

**Ladies Class B**  
**Sarah Tarbox**  
**Tara Thomas**



**1<sup>st</sup> Place**

**Elders Class B**  
**James Benton**





#### Mens Class B

1<sup>st</sup> Place  
2<sup>nd</sup> Place  
3<sup>rd</sup> Place

Aaron Sestak  
B C Struble  
Tracey Heaton



#### Mens Class C

1<sup>st</sup> Place  
2<sup>nd</sup> Place  
3<sup>rd</sup> Place

Arlen Lee  
Tanner Steineke  
Dan Cahill





**Mens Class D**

**1<sup>st</sup> Place**  
**2<sup>nd</sup> Place**  
**3<sup>rd</sup> Place**

**Logan Chambers**  
**Galen Minske**  
**Larry Reemts**



**Mens Class E**

**1<sup>st</sup> Place**  
**2<sup>nd</sup> Place**  
**3<sup>rd</sup> Place**

**John Barber**  
**Bobby Wilcox**  
**Dakotah Steineke**



**2022 State Doubles Class A****1622016 08/27/22**

(Rank: W/L - Rgr% - H2H - Pts)

Pos	Team	Entry %	Hcp	Won	Lost	Pts	Rgrs	HtH	Ovr%	Sh	R%
1.	Chambers C-Chambers M	44.12	0	4	1	232	101	0	8.05-	280	36.07
2.	Kleinschmidt-Humphrey	31.17	0	3	2	162	74	0	4.74-	280	26.43
3.	Red Shirt-Roach	36.35	0	2	2	168	80	0	3.02-	240	33.33
4.	Marks-Markwed	32.60	0	2	2	131	55	0	9.69-	240	22.92
5.	Berning-Hinckley	39.27	0	0	4	104	51	0	18.02-	240	21.25

**1. Chambers C-Chambers M 4-1 (A. - Carl Chambers; B. - Macey Chambers)**

Opponent	Score	Sh	A-Rgr	A-%	B-Rgr	B-%
Kleinschmidt-Humphrey	35/ 40	30	9	30.00	10	33.33
Red Shirt-Roach	40/ 28	30	6	20.00	9	30.00
Marks-Markwed	74/ 20	30	16	53.33	14	46.67
Berning-Hinckley	45/ 33	30	9	30.00	11	36.67
Kleinschmidt-Humphrey	38/ 22	20	8	40.00	9	45.00
	232	140	48	34.29	53	37.86

**2. Kleinschmidt-Humphrey 3-2 (A. - Roland Kleinschmidt; B. - Chace Humphrey)**

Opponent	Score	Sh	A-Rgr	A-%	B-Rgr	B-%
Berning-Hinckley	43/ 11	30	13	43.33	3	10.00
Chambers C-Chambers M	40/ 35	30	11	36.67	9	30.00
Marks-Markwed	38/ 31	30	9	30.00	7	23.33
Red Shirt-Roach	19/ 64	30	7	23.33	4	13.33
Chambers C-Chambers M	22/ 38	20	6	30.00	5	25.00
	162	140	46	32.86	28	20.00

**3. Red Shirt-Roach 2-2 (A. - Robert Red Shirt; B. - Roland Roach Jr.)**

Opponent	Score	Sh	A-Rgr	A-%	B-Rgr	B-%
Marks-Markwed	26/ 38	30	6	20.00	12	40.00
Chambers C-Chambers M	28/ 40	30	6	20.00	8	26.67
Berning-Hinckley	50/ 32	30	13	43.33	10	33.33
Kleinschmidt-Humphrey	64/ 19	30	12	40.00	13	43.33
	168	120	37	30.83	43	35.83

**4. Marks-Markwed 2-2 (A. - Vine Marks; B. - Billy Markwed)**

Opponent	Score	Sh	A-Rgr	A-%	B-Rgr	B-%
Red Shirt-Roach	38/ 26	30	5	16.67	13	43.33
Berning-Hinckley	42/ 28	30	11	36.67	5	16.67
Kleinschmidt-Humphrey	31/ 38	30	5	16.67	5	16.67
Chambers C-Chambers M	20/ 74	30	8	26.67	3	10.00
	131	120	29	24.17	26	21.67

**5. Berning-Hinckley 0-4 (A. - Steve Berning; B. - Dennis Hinckley)**

Opponent	Score	Sh	A-Rgr	A-%	B-Rgr	B-%
Kleinschmidt-Humphrey	11/ 43	30	4	13.33	2	6.67
Marks-Markwed	28/ 42	30	11	36.67	5	16.67
Red Shirt-Roach	32/ 50	30	6	20.00	7	23.33
Chambers C-Chambers M	33/ 45	30	11	36.67	5	16.67
	104	120	32	26.67	19	15.83

**2022 State Doubles Class B****1622016 08/27/22**

(Rank: W/L - Rgr% - H2H - Pts)

Pos	Team	Entry %	Hcp	Won	Lost	Pts	Rgrs	HtH	Ovr%	Sh	R%
1.	Thomas-Cahill	18.84	0	3	1	133	39	0	2.59-	240	16.25
2.	Sestak-Heaton	17.60	0	3	1	133	34	0	3.44-	240	14.17
3.	Barber-Barber	26.42	0	2	2	108	44	0	8.09-	240	18.33
4.	Benton-Reemts	18.73	0	1	3	124	37	0	3.31-	240	15.42
5.	Hofland-Whaley	26.66	0	1	3	123	35	0	12.08-	240	14.58

**1. Thomas-Cahill 3-1 (A. - Thebea Thomas; B. - Dan Cahill)**

Opponent	Score	Sh	A-Rgr	A-%	B-Rgr	B-%
Benton-Reemts	43/ 32	30	10	33.33	4	13.33
Hofland-Whaley	35/ 26	30	5	16.67	4	13.33
Barber-Barber	26/ 32	30	8	26.67	1	3.33
Sestak-Heaton	29/ 28	30	3	10.00	4	13.33
	133	120	26	21.67	13	10.83

**2. Sestak-Heaton 3-1 (A. - Aaron Sestak; B. - Tracey Heaton)**

Opponent	Score	Sh	A-Rgr	A-%	B-Rgr	B-%
Barber-Barber	39/ 18	30	6	20.00	5	16.67
Hofland-Whaley	36/ 20	30	6	20.00	3	10.00
Benton-Reemts	30/ 29	30	6	20.00	2	6.67
Thomas-Cahill	28/ 29	30	4	13.33	2	6.67
	133	120	22	18.33	12	10.00

**3. Barber-Barber 2-2 (A. - Carlene Barber; B. - John Barber)**

Opponent	Score	Sh	A-Rgr	A-%	B-Rgr	B-%
Sestak-Heaton	18/ 39	30	7	23.33	0	0.00
Benton-Reemts	21/ 47	30	8	26.67	0	0.00
Thomas-Cahill	32/ 26	30	13	43.33	1	3.33
Hofland-Whaley	37/ 29	30	14	46.67	1	3.33
	108	120	42	35.00	2	1.67

**4. Benton-Reemts 1-3 (A. - James Benton; B. - Larry Reemts)**

Opponent	Score	Sh	A-Rgr	A-%	B-Rgr	B-%
Thomas-Cahill	32/ 43	30	8	26.67	2	6.67
Barber-Barber	47/ 21	30	11	36.67	4	13.33
Sestak-Heaton	29/ 30	30	4	13.33	3	10.00
Hofland-Whaley	16/ 48	30	4	13.33	1	3.33
	124	120	27	22.50	10	8.33

**5. Hofland-Whaley 1-3 (A. - Steve Hofland; B. - Kurt Whaley)**

Opponent	Score	Sh	A-Rgr	A-%	B-Rgr	B-%
Sestak-Heaton	20/ 36	30	2	6.67	2	6.67
Thomas-Cahill	26/ 35	30	6	20.00	1	3.33
Benton-Reemts	48/ 16	30	10	33.33	4	13.33
Barber-Barber	29/ 37	30	5	16.67	5	16.67
	123	120	23	19.17	12	10.00



**2022 State Doubles Class C****1622016 08/27/22**

(Rank: W/L - Rgr% - H2H - Pts)

Pos	Team	Entry %	Hcp	Won	Lost	Pts	Rgrs	HtH	Ovr%	Sh	R%
1.	Chambers B-Chambers L	13.51	0	3	1	124	28	0	1.85-	240	11.67
2.	Tincup-Lee A	15.27	0	2	2	138	38	0	0.56	240	15.83
3.	Walton-Steineke T	16.38	0	2	2	117	28	0	4.71-	240	11.67
4.	Struble-Struble	12.41	0	2	2	98	27	0	1.15-	240	11.25
5.	Osterberg Jr-Dunham	17.09	0	1	3	109	33	0	3.34-	240	13.75

**1. Chambers B-Chambers L 3-1 (A. - Bryce Chambers; B. - Logan Chambers)**

Opponent	Score	Sh	A-Rgr	A-%	B-Rgr	B-%
Tincup-Lee A	27/ 40	30	5	16.67	2	6.67
Osterberg Jr-Dunham	38/ 26	30	8	26.67	3	10.00
Struble-Struble	31/ 15	30	5	16.67	0	0.00
Walton-Steineke T	28/ 24	30	5	16.67	0	0.00
	124	120	23	19.17	5	4.17

**2. Tincup-Lee A 2-2 (A. - Richard Tin Cup; B. - Arlen Lee)**

Opponent	Score	Sh	A-Rgr	A-%	B-Rgr	B-%
Chambers B-Chambers L	40/ 27	30	3	10.00	8	26.67
Walton-Steineke T	27/ 37	30	3	10.00	5	16.67
Osterberg Jr-Dunham	39/ 30	30	8	26.67	2	6.67
Struble-Struble	32/ 37	30	4	13.33	5	16.67
	138	120	18	15.00	20	16.67

**3. Walton-Steineke T 2-2 (A. - Crystal Walton; B. - Tanner Steineke)**

Opponent	Score	Sh	A-Rgr	A-%	B-Rgr	B-%
Struble-Struble	21/ 29	30	4	13.33	4	13.33
Tincup-Lee A	37/ 27	30	5	16.67	1	3.33
Chambers B-Chambers L	24/ 28	30	5	16.67	1	3.33
Osterberg Jr-Dunham	35/ 26	30	4	13.33	4	13.33
	117	120	18	15.00	10	8.33

**4. Struble-Struble 2-2 (A. - B C Struble; B. - Sheldon Struble)**

Opponent	Score	Sh	A-Rgr	A-%	B-Rgr	B-%
Osterberg Jr-Dunham	17/ 27	30	2	6.67	1	3.33
Walton-Steineke T	29/ 21	30	8	26.67	3	10.00
Chambers B-Chambers L	15/ 31	30	2	6.67	0	0.00
Tincup-Lee A	37/ 32	30	7	23.33	4	13.33
	98	120	19	15.83	8	6.67

**5. Osterberg Jr-Dunham 1-3 (A. - Walter Osterberg Jr.; B. - Tom Dunham)**

Opponent	Score	Sh	A-Rgr	A-%	B-Rgr	B-%
Struble-Struble	27/ 17	30	5	16.67	0	0.00
Chambers B-Chambers L	26/ 38	30	9	30.00	1	3.33
Tincup-Lee A	30/ 39	30	9	30.00	1	3.33
Walton-Steineke T	26/ 35	30	7	23.33	1	3.33
	109	120	30	25.00	3	2.50



**2022 State Doubles Class D**
**1622016 08/27/22**

(Rank: W/L - Rgr% - H2H - Pts)

Pos	Team	Entry %	Hcp	Won	Lost	Pts	Rgrs	HtH	Ovr%	Sh	R%
1.	Haiwick-Haiwick	10.12	0	4	0	142	29	0	1.96	240	12.08
2.	Robinson-Steineke D	9.30	0	3	1	115	20	0	0.96-	240	8.33
3.	Orwick-Minske	10.35	0	2	2	96	11	0	5.77-	240	4.58
4.	Tietjen-Thomas	4.43	0	1	3	92	11	0	0.15	240	4.58
5.	Tenold-Smith	4.73	0	0	4	53	6	0	2.23-	240	2.50

**1. Haiwick-Haiwick 4-0 (A. - Cody Haiwick; B. - Robert Haiwick)**

Opponent	Score	Sh	A-Rgr	A-%	B-Rgr	B-%
Tietjen-Thomas	27/ 11	30	2	6.67	2	6.67
Tenold-Smith	56/ 3	30	3	10.00	8	26.67
Robinson-Steineke D	30/ 25	30	5	16.67	2	6.67
Orwick-Minske	29/ 25	30	3	10.00	4	13.33
	142	120	13	10.83	16	13.33

**2. Robinson-Steineke D 3-1 (A. - Dee Robinson; B. - Dakotah Steineke)**

Opponent	Score	Sh	A-Rgr	A-%	B-Rgr	B-%
Tenold-Smith	25/ 12	30	3	10.00	0	0.00
Orwick-Minske	32/ 14	30	6	20.00	1	3.33
Haiwick-Haiwick	25/ 30	30	2	6.67	0	0.00
Tietjen-Thomas	33/ 27	30	8	26.67	0	0.00
	115	120	19	15.83	1	0.83

**3. Orwick-Minske 2-2 (A. - Jack Orwick; B. - Galen Minske)**

Opponent	Score	Sh	A-Rgr	A-%	B-Rgr	B-%
Tietjen-Thomas	23/ 22	30	2	6.67	1	3.33
Robinson-Steineke D	14/ 32	30	1	3.33	1	3.33
Tenold-Smith	34/ 7	30	1	3.33	1	3.33
Haiwick-Haiwick	25/ 29	30	2	6.67	2	6.67
	96	120	6	5.00	5	4.17

**4. Tietjen-Thomas 1-3 (A. - Tyson Tietjen; B. - Tara Thomas)**

Opponent	Score	Sh	A-Rgr	A-%	B-Rgr	B-%
Haiwick-Haiwick	11/ 27	30	0	0.00	1	3.33
Orwick-Minske	22/ 23	30	1	3.33	3	10.00
Tenold-Smith	32/ 31	30	1	3.33	1	3.33
Robinson-Steineke D	27/ 33	30	1	3.33	3	10.00
	92	120	3	2.50	8	6.67

**5. Tenold-Smith 0-4 (A. - Pete Tenold; B. - George Smith)**

Opponent	Score	Sh	A-Rgr	A-%	B-Rgr	B-%
Robinson-Steineke D	12/ 25	30	1	3.33	1	3.33
Haiwick-Haiwick	3/ 56	30	0	0.00	0	0.00
Tietjen-Thomas	31/ 32	30	1	3.33	1	3.33
Orwick-Minske	7/ 34	30	1	3.33	1	3.33
	53	120	3	2.50	3	2.50

**2022 State Singles Ladies A**  
(Rank: W/L - Rgr% - H2H - OvrAvg)

**1622017 08/28/22**

Pos	Name	Entry %	Hcp	Card#	St	Won	Lost	Pts	Rgrs	HtH	Ovr%	Sh	R%
1.	Macey Chambers	43.17	0	160232	SD	6	1	231	93	0	8.73-	270	34.44
2.	Carlene Barber	47.07	0	160128	SD	5	2	266	104	0	8.55-	270	38.52
3.	Thebea Thomas	23.93	0	160029	SD	1	5	124	41	0	6.85-	240	17.08
4.	Crystal Walton	21.30	0	160110	SD	1	5	67	27	0	10.05-	240	11.25

**1. Macey Chambers 6-1**

Opponent	Score	R	Sh	%
Thebea Thomas	45/ 10	15	40	37.50
Crystal Walton	48/ 11	13	40	32.50
Carlene Barber	26/ 23	17	40	42.50
Thebea Thomas	29/ 22	13	40	32.50
Crystal Walton	36/ 13	14	40	35.00
Carlene Barber	23/ 39	13	40	32.50
Carlene Barber	24/ 23	8	30	26.67
	231	93	270	34.44

**2. Carlene Barber 5-2**

Opponent	Score	R	Sh	%
Crystal Walton	46/ 6	17	40	42.50
Thebea Thomas	54/ 18	20	40	50.00
Macey Chambers	23/ 26	16	40	40.00
Crystal Walton	36/ 3	10	40	25.00
Thebea Thomas	45/ 22	15	40	37.50
Macey Chambers	39/ 23	18	40	45.00
Macey Chambers	23/ 24	8	30	26.67
	266	104	270	38.52

**3. Thebea Thomas 1-5**

Opponent	Score	R	Sh	%
Macey Chambers	10/ 45	3	40	7.50
Carlene Barber	18/ 54	8	40	20.00
Crystal Walton	29/ 10	6	40	15.00
Macey Chambers	22/ 29	11	40	27.50
Carlene Barber	22/ 45	8	40	20.00
Crystal Walton	23/ 24	5	40	12.50
	124	41	240	17.08

**4. Crystal Walton 1-5**

Opponent	Score	R	Sh	%
Carlene Barber	6/ 46	7	40	17.50
Macey Chambers	11/ 48	3	40	7.50
Thebea Thomas	10/ 29	2	40	5.00
Carlene Barber	3/ 36	3	40	7.50
Macey Chambers	13/ 36	7	40	17.50
Thebea Thomas	24/ 23	5	40	12.50
	67	27	240	11.25

**2022 State Singles Junior A**  
(Rank: W/L - Rgr% - H2H - OvrAvg)

**1622017 08/28/22**

Pos	Name	Entry %	Hcp	Card#	St	Won	Lost	Pts	Rgrs	HtH	Ovr%	Sh	R%
1.	Chace Humphrey	23.73	0	160120	SD	5	0	244	80	0	8.27	250	32.00
2.	Lane Kester	10.15	0	160202	SD	0	0	0	0	0	0.00	0	0.00

**1. Chace Humphrey 5-0**

Opponent	Score	R	Sh	%
PACER	72/ 0	25	50	50.00
PACER	54/ 0	15	50	30.00
PACER	50/ 0	22	50	44.00
PACER	20/ 0	4	50	8.00
PACER	48/ 0	14	50	28.00
	244	80	250	32.00

**2. Lane Kester 0-0**

Opponent	Score	R	Sh	%
----------	-------	---	----	---



**2022 State Singles Elder A**  
(Rank: W/L - Rgr% - H2H - OvrAvg)

**1622017 08/28/22**

Pos	Name	Entry %	Hcp	Card#	St	Won	Lost	Pts	Rgrs	HtH	Ovr%	Sh	R%
1.	Vine Marks	38.48	0	160061	SD	5	1	224	114	0	2.23	280	40.71
2.	Robert Red Shirt	44.58	0	160074	SD	4	2	195	106	0	6.72-	280	37.86
3.	Steve Berning	40.95	0	230252	SD	3	2	178	88	0	5.75-	250	35.20
4.	Carl Chambers	45.07	0	160068	SD	2	3	173	94	0	7.47-	250	37.60
5.	Roland Kleinschmidt	38.60	0	160039	SD	2	3	156	89	0	3.00-	250	35.60
6.	Dennis Hinckley	37.59	0	160263	SD	0	5	104	60	0	13.59-	250	24.00

**1. Vine Marks 5-1**

Opponent	Score	R	Sh	%
Robert Red Shirt	35/ 37	19	50	38.00
Carl Chambers	36/ 20	17	50	34.00
Roland Kleinschmidt	29/ 26	21	50	42.00
Dennis Hinckley	39/ 30	16	50	32.00
Steve Berning	48/ 31	23	50	46.00
Robert Red Shirt	37/ 13	18	30	60.00
	224	114	280	40.71

**2. Robert Red Shirt 4-2**

Opponent	Score	R	Sh	%
Vine Marks	37/ 35	21	50	42.00
Roland Kleinschmidt	36/ 23	22	50	44.00
Dennis Hinckley	34/ 20	18	50	36.00
Steve Berning	37/ 36	19	50	38.00
Carl Chambers	38/ 40	16	50	32.00
Vine Marks	13/ 37	10	30	33.33
	195	106	280	37.86

**3. Steve Berning 3-2**

Opponent	Score	R	Sh	%
Roland Kleinschmidt	35/ 33	18	50	36.00
Dennis Hinckley	37/ 18	16	50	32.00
Carl Chambers	39/ 30	16	50	32.00
Robert Red Shirt	36/ 37	19	50	38.00
Vine Marks	31/ 48	19	50	38.00
	178	88	250	35.20

**4. Carl Chambers 2-3**

Opponent	Score	R	Sh	%
Dennis Hinckley	65/ 6	28	50	56.00
Vine Marks	20/ 36	16	50	32.00
Steve Berning	30/ 39	16	50	32.00
Roland Kleinschmidt	18/ 40	15	50	30.00
Robert Red Shirt	40/ 38	19	50	38.00
	173	94	250	37.60

**5. Roland Kleinschmidt 2-3**

Opponent	Score	R	Sh	%
Steve Berning	33/ 35	16	50	32.00
Robert Red Shirt	23/ 36	18	50	36.00
Vine Marks	26/ 29	20	50	40.00
Carl Chambers	40/ 18	21	50	42.00
Dennis Hinckley	34/ 30	14	50	28.00
	156	89	250	35.60

**6. Dennis Hinckley 0-5**

Opponent	Score	R	Sh	%
Carl Chambers	6/ 65	10	50	20.00
Steve Berning	18/ 37	11	50	22.00
Robert Red Shirt	20/ 34	14	50	28.00
Vine Marks	30/ 39	11	50	22.00
Roland Kleinschmidt	30/ 34	14	50	28.00
	104	60	250	24.00



**2022 State Singles Mens A**  
(Rank: W/L - Rgr% - H2H - OvrAvg)

**1622017 08/28/22**

Pos	Name	Entry %	Hcp	Card#	St	Won	Lost	Pts	Rgrs	HtH	Ovr%	Sh	R%
1.	Jim Wike	38.90	0	160104	SD	5	0	226	98	0	0.30	250	39.20
2.	Roland Roach Jr.	28.12	0	160088	SD	4	1	196	79	0	3.48	250	31.60
3.	Anthony Tallman Jr.	39.57	0	160123	SD	3	2	176	80	0	7.57-	250	32.00
4.	Shane Roach	23.61	0	160218	SD	1	4	136	57	0	0.81-	250	22.80
5.	Steve Hofland	26.91	0	160028	SD	1	4	110	47	0	8.11-	250	18.80
6.	Kurt Whaley	26.41	0	160082	SD	1	4	96	31	0	14.01-	250	12.40

**1. Jim Wike 5-0**

Opponent	Score	R	Sh	%
Kurt Whaley	55/ 8	16	50	32.00
Steve Hofland	48/ 24	22	50	44.00
Shane Roach	55/ 7	21	50	42.00
Roland Roach Jr.	35/ 23	17	50	34.00
Anthony Tallman Jr.	33/ 22	22	50	44.00
	226	98	250	39.20

**2. Roland Roach Jr. 4-1**

Opponent	Score	R	Sh	%
Steve Hofland	39/ 21	17	50	34.00
Shane Roach	37/ 24	17	50	34.00
Anthony Tallman Jr.	38/ 31	18	50	36.00
Jim Wike	23/ 35	14	50	28.00
Kurt Whaley	59/ 13	13	50	26.00
	196	79	250	31.60

**3. Anthony Tallman Jr. 3-2**

Opponent	Score	R	Sh	%
Shane Roach	45/ 32	16	50	32.00
Kurt Whaley	27/ 24	9	50	18.00
Roland Roach Jr.	31/ 38	16	50	32.00
Steve Hofland	51/ 11	21	50	42.00
Jim Wike	22/ 33	18	50	36.00
	176	80	250	32.00

**4. Shane Roach 1-4**

Opponent	Score	R	Sh	%
Anthony Tallman Jr.	32/ 45	10	50	20.00
Roland Roach Jr.	24/ 37	13	50	26.00
Jim Wike	7/ 55	7	50	14.00
Kurt Whaley	25/ 27	8	50	16.00
Steve Hofland	48/ 17	19	50	38.00
	136	57	250	22.80

**5. Steve Hofland 1-4**

Opponent	Score	R	Sh	%
Roland Roach Jr.	21/ 39	9	50	18.00
Jim Wike	24/ 48	13	50	26.00
Kurt Whaley	37/ 24	10	50	20.00
Anthony Tallman Jr.	11/ 51	8	50	16.00
Shane Roach	17/ 48	7	50	14.00
	110	47	250	18.80

**6. Kurt Whaley 1-4**

Opponent	Score	R	Sh	%
Jim Wike	8/ 55	4	50	8.00
Anthony Tallman Jr.	24/ 27	7	50	14.00
Steve Hofland	24/ 37	5	50	10.00
Shane Roach	27/ 25	8	50	16.00
Roland Roach Jr.	13/ 59	7	50	14.00
	96	31	250	12.40

**2022 State Singles Elder B**  
(Rank: W/L - OvrAvg - H2H - Pts)

**1622017 08/28/22**

Pos	Name	Entry %	Hcp	Card#	St	Won	Lost	Pts	Rgrs	HtH	Ovr%	Sh	R%
1.	James Benton	28.83	0	160112	SD	5	0	187	67	0	2.03-	250	26.80
2.	Billy Markwed	26.72	3	160167	SD	4	1	220	69	0	0.88	250	27.60

**1. James Benton 5-0**

Opponent	Score	R	Sh	%
PACER	70/ 0	18	50	36.00
PACER	37/ 0	12	50	24.00
PACER	10/ 0	10	50	20.00
PACER	35/ 0	12	50	24.00
Billy Markwed	35/ 25	15	50	30.00
	187	67	250	26.80

**2. Billy Markwed 4-1**

Opponent	Score	R	Sh	%
PACER	46/ 0	12	50	24.00
PACER	49/ 0	17	50	34.00
PACER	55/ 0	13	50	26.00
PACER	45/ 0	13	50	26.00
James Benton	25/ 35	14	50	28.00
	220	69	250	27.60



**2022 State Singles Ladies B****1622017 08/28/22**

(Rank: W/L - OvrAvg - H2H - Pts)

Pos	Name	Entry %	Hcp	Card#	St	Won	Lost	Pts	Rgrs	HtH	Ovr%	Sh	R%
1.	Sarah Tarbox	12.15	4	160020	SD	5	0	190	30	0	0.15-	250	12.00
2.	Tara Thomas	2.36	16	803049	SD	4	1	208	16	0	4.04	250	6.40
3.	Dee Robinson	15.36	0	160004	SD	3	2	165	23	0	6.16-	250	9.20

**1. Sarah Tarbox 5-0**

Opponent	Score	R	Sh	%
PACER	35/ 0	8	50	16.00
PACER	29/ 0	4	50	8.00
Dee Robinson	45/ 44	7	50	14.00
Tara Thomas	45/ 44	5	50	10.00
PACER	36/ 0	6	50	12.00
	190	30	250	12.00

**2. Tara Thomas 4-1**

Opponent	Score	R	Sh	%
PACER	38/ 0	2	50	4.00
PACER	40/ 0	5	50	10.00
PACER	42/ 0	3	50	6.00
Sarah Tarbox	44/ 45	3	50	6.00
Dee Robinson	44/ 37	3	50	6.00
	208	16	250	6.40

**3. Dee Robinson 3-2**

Opponent	Score	R	Sh	%
PACER	27/ 0	6	50	12.00
PACER	29/ 0	5	50	10.00
Sarah Tarbox	44/ 45	5	50	10.00
PACER	28/ 0	4	50	8.00
Tara Thomas	37/ 44	3	50	6.00
	165	23	250	9.20

**2022 State Singles Mens B****1622017 08/28/22**

(Rank: W/L - Rgr% - H2H - OvrAvg)

Pos	Name	Entry %	Hcp	Card#	St	Won	Lost	Pts	Rgrs	HtH	Ovr%	Sh	R%
1.	Aaron Sestak	19.62	0	160210	SD	5	0	178	49	0	0.02-	250	19.60
2.	B C Struble	15.94	0	160176	SD	3	2	143	40	0	0.06	250	16.00
3.	Tracey Heaton	15.58	0	160234	SD	2	3	121	37	0	0.78-	250	14.80
4.	Richard Tin Cup	23.27	0	801754	SD	2	3	107	32	0	10.47-	250	12.80
5.	Bryce Chambers	18.25	0	160228	SD	2	3	134	30	0	6.25-	250	12.00
6.	Tom Dagel	13.77	0	160159	SD	1	4	101	34	0	0.17-	250	13.60

**1. Aaron Sestak 5-0**

Opponent	Score	R	Sh	%
Tracey Heaton	40/ 28	11	50	22.00
B C Struble	25/ 20	2	50	4.00
Tom Dagel	45/ 10	13	50	26.00
Bryce Chambers	37/ 26	13	50	26.00
Richard Tin Cup	31/ 17	10	50	20.00
	178	49	250	19.60

**2. B C Struble 3-2**

Opponent	Score	R	Sh	%
Bryce Chambers	30/ 28	8	50	16.00
Aaron Sestak	20/ 25	2	50	4.00
Tracey Heaton	32/ 15	10	50	20.00
Richard Tin Cup	24/ 26	8	50	16.00
Tom Dagel	37/ 22	12	50	24.00
	143	40	250	16.00

**3. Tracey Heaton 2-3**

Opponent	Score	R	Sh	%
Aaron Sestak	28/ 40	9	50	18.00
Richard Tin Cup	23/ 33	6	50	12.00
B C Struble	15/ 32	4	50	8.00
Tom Dagel	27/ 25	10	50	20.00
Bryce Chambers	28/ 24	8	50	16.00
	121	37	250	14.80

**4. Richard Tin Cup 2-3**

Opponent	Score	R	Sh	%
Tom Dagel	9/ 32	4	50	8.00
Tracey Heaton	33/ 23	8	50	16.00
Bryce Chambers	22/ 24	5	50	10.00
B C Struble	26/ 24	7	50	14.00
Aaron Sestak	17/ 31	8	50	16.00
	107	32	250	12.80

**5. Bryce Chambers 2-3**

Opponent	Score	R	Sh	%
B C Struble	28/ 30	5	50	10.00
Tom Dagel	32/ 12	8	50	16.00
Richard Tin Cup	24/ 22	5	50	10.00
Aaron Sestak	26/ 37	7	50	14.00
Tracey Heaton	24/ 28	5	50	10.00
	134	30	250	12.00

**6. Tom Dagel 1-4**

Opponent	Score	R	Sh	%
Richard Tin Cup	32/ 9	9	50	18.00
Bryce Chambers	12/ 32	4	50	8.00
Aaron Sestak	10/ 45	5	50	10.00
Tracey Heaton	25/ 27	10	50	20.00
B C Struble	22/ 37	6	50	12.00
	101	34	250	13.60



**2022 State Singles Mens C**  
(Rank: W/L - Rgr% - H2H - OvrAvg)

**1622017 08/28/22**

Pos	Name	Entry %	Hcp	Card#	St	Won	Lost	Pts	Rgrs	HtH	Ovr%	Sh	R%
1.	Arlen Lee	10.53	0	160057	SD	4	1	154	36	0	3.87	250	14.40
2.	Tanner Steineke	11.45	0	160079	SD	4	1	133	27	0	0.65-	250	10.80
3.	Dan Cahill	13.75	0	160130	SD	3	2	128	30	0	1.75-	250	12.00
4.	Jack Orwick	12.64	0	160109	SD	2	3	132	35	0	1.36	250	14.00
5.	Cody Haiwick	11.05	0	800657	SD	2	3	93	16	0	4.65-	250	6.40
6.	Robert Haiwick	9.18	0	160059	SD	0	5	78	18	0	1.98-	250	7.20

**1. Arlen Lee 4-1**

Opponent	Score	R	Sh	%
Jack Orwick	25/ 26	8	50	16.00
Dan Cahill	35/ 23	8	50	16.00
Cody Haiwick	37/ 11	7	50	14.00
Robert Haiwick	31/ 20	6	50	12.00
Tanner Steineke	26/ 22	7	50	14.00
	154	36	250	14.40

**2. Tanner Steineke 4-1**

Opponent	Score	R	Sh	%
Cody Haiwick	34/ 12	7	50	14.00
Robert Haiwick	24/ 19	4	50	8.00
Dan Cahill	25/ 18	3	50	6.00
Jack Orwick	28/ 21	4	50	8.00
Arlen Lee	22/ 26	9	50	18.00
	133	27	250	10.80

**3. Dan Cahill 3-2**

Opponent	Score	R	Sh	%
Robert Haiwick	28/ 11	6	50	12.00
Arlen Lee	23/ 35	5	50	10.00
Tanner Steineke	18/ 25	3	50	6.00
Cody Haiwick	28/ 25	6	50	12.00
Jack Orwick	31/ 26	10	50	20.00
	128	30	250	12.00

**4. Jack Orwick 2-3**

Opponent	Score	R	Sh	%
Arlen Lee	26/ 25	10	50	20.00
Cody Haiwick	19/ 22	4	50	8.00
Robert Haiwick	40/ 16	9	50	18.00
Tanner Steineke	21/ 28	4	50	8.00
Dan Cahill	26/ 31	8	50	16.00
	132	35	250	14.00

**5. Cody Haiwick 2-3**

Opponent	Score	R	Sh	%
Tanner Steineke	12/ 34	3	50	6.00
Jack Orwick	22/ 19	2	50	4.00
Arlen Lee	11/ 37	2	50	4.00
Dan Cahill	25/ 28	4	50	8.00
Robert Haiwick	23/ 12	5	50	10.00
	93	16	250	6.40

**6. Robert Haiwick 0-5**

Opponent	Score	R	Sh	%
Dan Cahill	11/ 28	1	50	2.00
Tanner Steineke	19/ 24	6	50	12.00
Jack Orwick	16/ 40	4	50	8.00
Arlen Lee	20/ 31	5	50	10.00
Cody Haiwick	12/ 23	2	50	4.00
	78	18	250	7.20

**2022 State Singles Mens D**  
(Rank: W/L - Rgr% - H2H - OvrAvg)

**1622017 08/28/22**

Pos	Name	Entry %	Hcp	Card#	St	Won	Lost	Pts	Rgrs	HtH	Ovr%	Sh	R%
1.	Logan Chambers	8.77	0	160011	SD	5	0	170	38	0	6.43	250	15.20
2.	Galen Minske	8.06	0	160200	SD	4	1	114	21	0	0.34	250	8.40
3.	Larry Reemts	8.62	0	160050	SD	3	2	136	34	0	4.98	250	13.60
4.	Sheldon Struble	8.87	0	160154	SD	2	3	98	14	0	3.27-	250	5.60
5.	Tyson Tietjen	8.86	0	160211	SD	1	4	97	18	0	1.66-	250	7.20
6.	Tom Dunham	8.25	0	160034	SD	0	5	53	13	0	3.05-	250	5.20

**1. Logan Chambers 5-0**

Opponent	Score	R	Sh	%
Larry Reemts	40/ 10	12	50	24.00
Galen Minske	28/ 15	6	50	12.00
Sheldon Struble	34/ 17	5	50	10.00
Tyson Tietjen	40/ 14	10	50	20.00
Tom Dunham	28/ 15	5	50	10.00
	170	38	250	15.20

**2. Galen Minske 4-1**

Opponent	Score	R	Sh	%
Sheldon Struble	22/ 20	4	50	8.00
Logan Chambers	15/ 28	3	50	6.00
Tyson Tietjen	30/ 19	7	50	14.00
Tom Dunham	22/ 16	4	50	8.00
Larry Reemts	25/ 16	3	50	6.00
	114	21	250	8.40

**3. Larry Reemts 3-2**

Opponent	Score	R	Sh	%
Logan Chambers	10/ 40	2	50	4.00
Tyson Tietjen	28/ 15	6	50	12.00
Tom Dunham	39/ 4	10	50	20.00
Sheldon Struble	43/ 15	12	50	24.00
Galen Minske	16/ 25	4	50	8.00
	136	34	250	13.60

**4. Sheldon Struble 2-3**

Opponent	Score	R	Sh	%
Galen Minske	20/ 22	4	50	8.00
Tom Dunham	17/ 13	1	50	2.00
Logan Chambers	17/ 34	2	50	4.00
Larry Reemts	15/ 43	2	50	4.00
Tyson Tietjen	29/ 17	5	50	10.00
	98	14	250	5.60

**5. Tyson Tietjen 1-4**

Opponent	Score	R	Sh	%
Tom Dunham	32/ 5	5	50	10.00
Larry Reemts	15/ 28	3	50	6.00
Galen Minske	19/ 30	5	50	10.00
Logan Chambers	14/ 40	2	50	4.00
Sheldon Struble	17/ 29	3	50	6.00
	97	18	250	7.20

**6. Tom Dunham 0-5**

Opponent	Score	R	Sh	%
Tyson Tietjen	5/ 32	1	50	2.00
Sheldon Struble	13/ 17	2	50	4.00
Larry Reemts	4/ 39	2	50	4.00
Galen Minske	16/ 22	5	50	10.00
Logan Chambers	15/ 28	3	50	6.00
	53	13	250	5.20



**2022 State Singles Mens E**  
(Rank: W/L - Rgr% - H2H - OvrAvg)

**1622017 08/28/22**

Pos	Name	Entry %	Hcp	Card#	St	Won	Lost	Pts	Rgrs	HtH	Ovr%	Sh	R%
1.	John Barber	5.77	0	160239	SD	4	0	90	7	0	2.27-	200	3.50
2.	Bobby Wilcox	5.61	0	160256	SD	3	1	88	9	0	1.11-	200	4.50
3.	Dakotah Steineke	3.23	0	160073	SD	2	2	65	7	0	0.27	200	3.50
4.	George Smith	3.67	0	803299	SD	1	3	37	3	0	2.17-	200	1.50
5.	Pete Tenold	5.79	0	160129	SD	0	4	30	2	0	4.79-	200	1.00

**1. John Barber 4-0**

Opponent	Score	R	Sh	%
Dakotah Steineke	19/ 17	2	50	4.00
George Smith	22/ 5	1	50	2.00
Bobby Wilcox	23/ 19	3	50	6.00
Pete Tenold	26/ 8	1	50	2.00
	90	7	200	3.50

**2. Bobby Wilcox 3-1**

Opponent	Score	R	Sh	%
George Smith	28/ 10	4	50	8.00
Pete Tenold	25/ 5	3	50	6.00
John Barber	19/ 23	2	50	4.00
Dakotah Steineke	16/ 11	0	50	0.00
	88	9	200	4.50

**3. Dakotah Steineke 2-2**

Opponent	Score	R	Sh	%
John Barber	17/ 19	3	50	6.00
Pete Tenold	12/ 10	0	50	0.00
George Smith	25/ 11	2	50	4.00
Bobby Wilcox	11/ 16	2	50	4.00
	65	7	200	3.50

**4. George Smith 1-3**

Opponent	Score	R	Sh	%
Bobby Wilcox	10/ 28	1	50	2.00
John Barber	5/ 22	0	50	0.00
Dakotah Steineke	11/ 25	1	50	2.00
Pete Tenold	11/ 7	1	50	2.00
	37	3	200	1.50

**5. Pete Tenold 0-4**

Opponent	Score	R	Sh	%
Dakotah Steineke	10/ 12	1	50	2.00
Bobby Wilcox	5/ 25	0	50	0.00
George Smith	7/ 11	0	50	0.00
John Barber	8/ 26	1	50	2.00
	30	2	200	1.00